
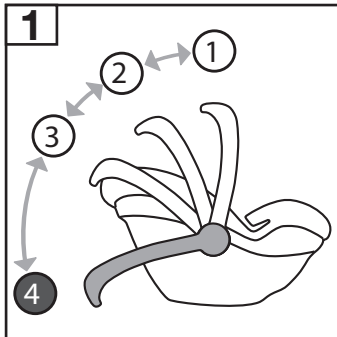


CAUTION: Your infant car seat carry handle may crack or fracture while carrying it, causing risk of injury to your child. Please follow the instructions below before further use of the carry handle. If your carry handle is already cracked or broken, please contact Britax Customer Service.

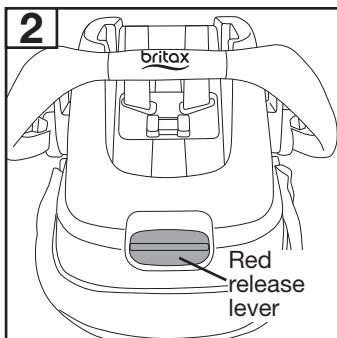
Tools Required: Hex Wrench (included) 

Carry Handle Bracket Installation

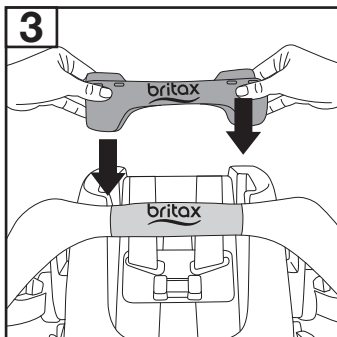


Remove your child from the infant car seat then lock the infant car seat carry handle in position 4.

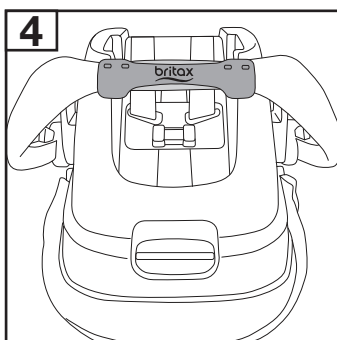
NOTE: Position 4 is below horizontal. It may be necessary to tilt the infant car seat forward in order to engage.



Turn the infant car seat upside down and rotate so that the red release lever is toward you.

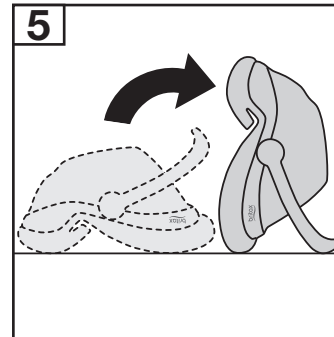


Align the logo on the carry handle bracket with the logo on the infant car seat carry handle.

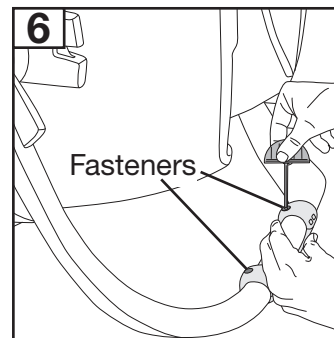


Wrap the bracket around the carry handle while maintaining proper alignment of the Britax logos.

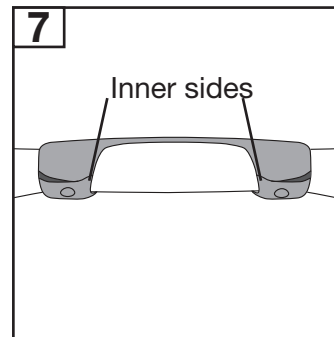
IMPORTANT: The logo on the carry handle should be completely covered by the bracket.



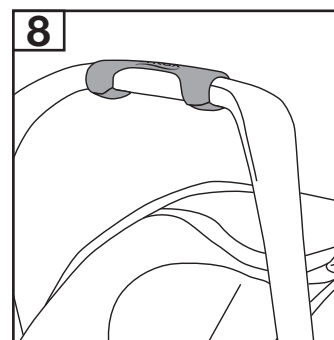
Tip up the infant car seat so that it is resting on the carry handle.



Use one hand to apply pressure and hold the bracket closed. Then use your other hand to engage and firmly tighten both fasteners into the bracket with the hex wrench.



The fasteners are tight when the inner sides of the bracket are flush.



The remedy is now complete and your infant car seat carry handle is safe for normal use. If you have any questions, please contact Britax Customer Service.

For a video of this procedure please visit www.bsaf35recall.com.